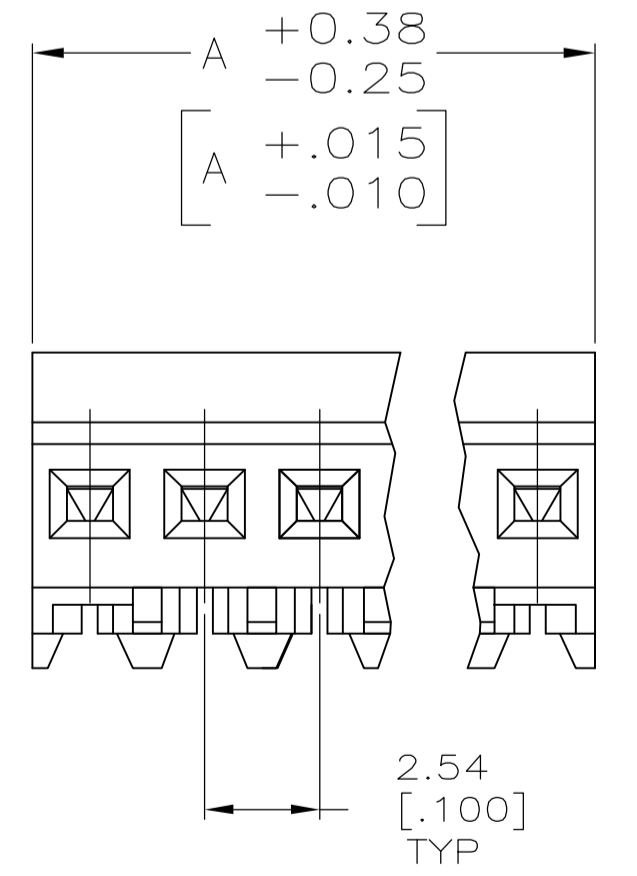
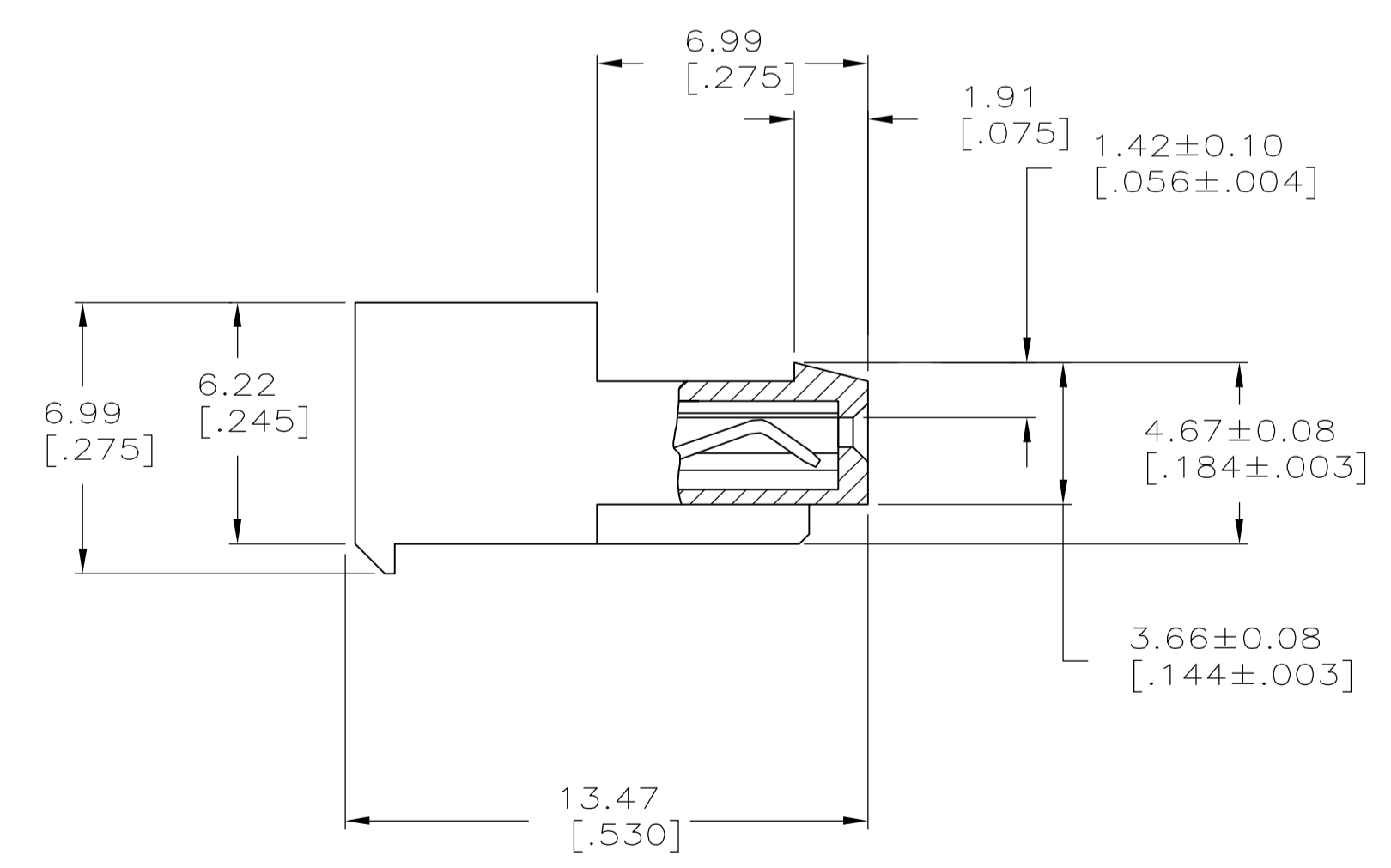
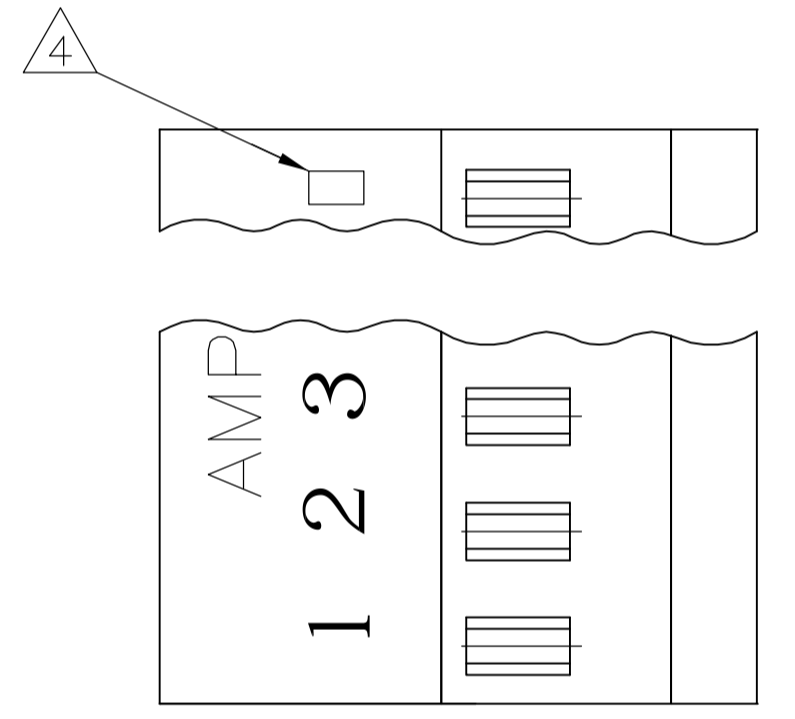


LOC		DIST		REVISIONS			
F	LTR	DESCRIPTION	DATE	DWN	APVD		
F		REVISED PER ECO-07-003723	22FEB07	KW	DB		

- 1 MATERIAL: CONNECTOR-NYLON UL94V-2 (RED).
 CONTACTS-0.30 [.012] THICK COPPER ALLOY
 BRIGHT TIN-LEAD 0.00203 [.000080] MINIMUM THICK FOR CONTACTS
 641534-2 THRU 641534-8,
 MATTE WHISKER MITIGATED TIN PLATE 0.00203 [.000080] MINIMUM THICK OVER
 NICKEL UNDERPLATE FOR CONTACTS 3-641534-2 THRU 3-641534-8.
- 2. CONTACTS ACCEPT 22 AWG WIRE WITH 1.52 [.060] MAXIMUM INSULATION DIAMETER.
- 3. CONTACTS MUST ACCEPT 0.36-0.51 [.014-.020] SQUARE OR ROUND POST AND REMAINED LOCKED IN POSITION.
- 4 IDENTIFICATION NUMBER FOR LAST CIRCUIT MAY NOT APPEAR ON ALL ASSEMBLIES.
- 5. DIMENSIONS IN BRACKETS ARE IN INCHES.
- 6. HOUSING FEATURES ARE: CLOSED END WITH LOCKING RAMP & LED CONTACT.



LEAD FREE	20.32 [.800]	8	3-641534-8
	10.16 [.400]	4	3-641534-4
	7.62 [.300]	3	3-641534-3
	5.08 [.200]	2	3-641534-2
	DIM A	NO.OF POSN	ASSEMBLY

CONTAINS LEAD	20.32 [.800]	8	641534-8
	10.16 [.400]	4	641534-4
	7.62 [.300]	3	641534-3
	5.08 [.200]	2	641534-2
	DIM A	NO.OF POSN	ASSEMBLY

METRIC

THIS DRAWING IS A CONTROLLED DOCUMENT. DWN S_HOOVER 10-DEC-2004
 CHK D_BOSSI 10-DEC-2004
 APVD D_BOSSI 10-DEC-2004

tyco Tyco Electronics Corporation
 Harrisburg, Pa 17105-3608

TOLERANCES UNLESS OTHERWISE SPECIFIED:
 0. PLC ±
 1. PLC ±
 2. PLC ± 0.13 [.005]
 3. PLC ±
 4. PLC ±
 ANGLES ±

PRODUCT SPEC 108-1050
 APPLICATION SPEC 114-1019

NAME MTA-100 CONNECTOR ASSEMBLY, 22 AWG, FOR .014 TO .020 POST, SPECIAL

SIZE A1 CAGE CODE 00779 DRAWING NO. 641534
 WEIGHT CUSTOMER DRAWING SCALE 5:1 SHEET 1 OF 1 REV F